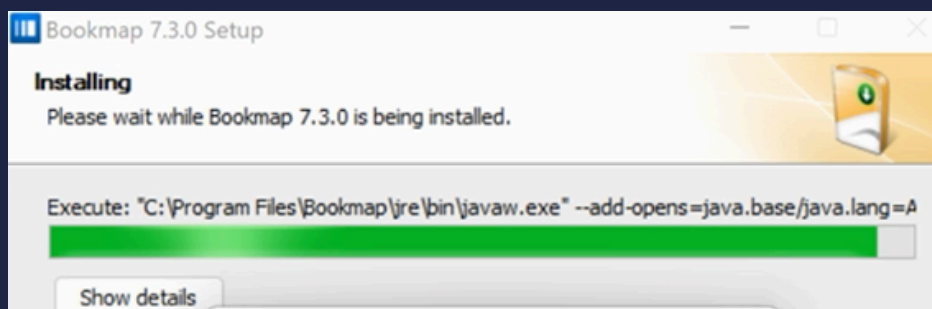




To link your Rithmic account to Bookmap using Phidias Propfirm, follow these steps:



To acquire Bookmap, it is recommended to download and install the software by following the video provided via the link below.





Upon installation of Bookmap, the application will initiate automatically. Utilize your license key for authentication.

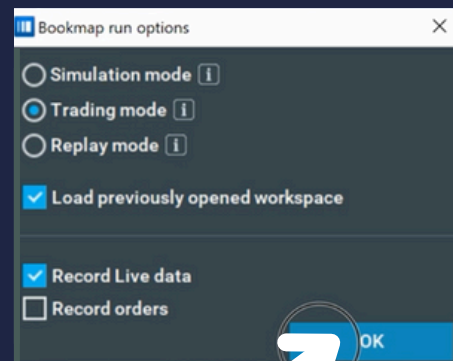
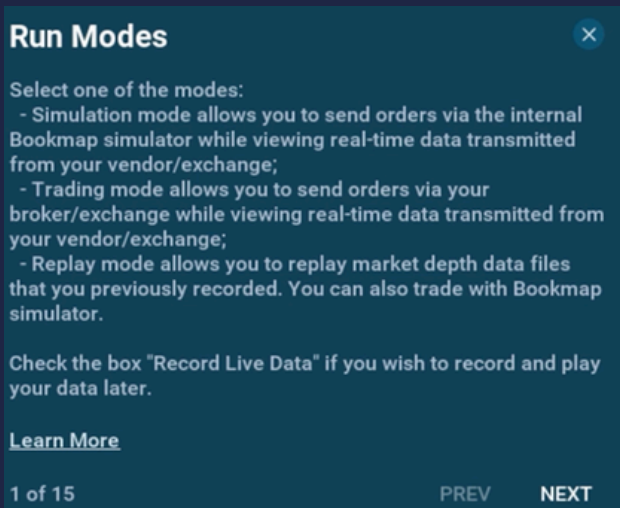
A screenshot of a login form. At the top, it says "Login with your Bookmap credentials. It will enable you to automatically launch Bookmap". There are two radio buttons: "Use license key" (unselected) and "Use username/password" (selected). Below are input fields for "Login" (with placeholder "Enter login...") and "Password". A "Submit" button is at the bottom left. A note at the bottom right says "You can skip this stage, complete the installation and manually insert your license to Bookmap".

Please input your license key and select "Activate."

A screenshot of a license key activation form. At the top left is the "BOOKMAP" logo. The text "Please enter your license key below" is above a large white input field. To the right of the input field is a green "Activate" button, with a black arrow pointing to it. At the bottom, there is a link: "To get your license key and manage subscription, log in to [Bookmap portal](#)". The "BOOKMAP" logo is also in the bottom right corner.



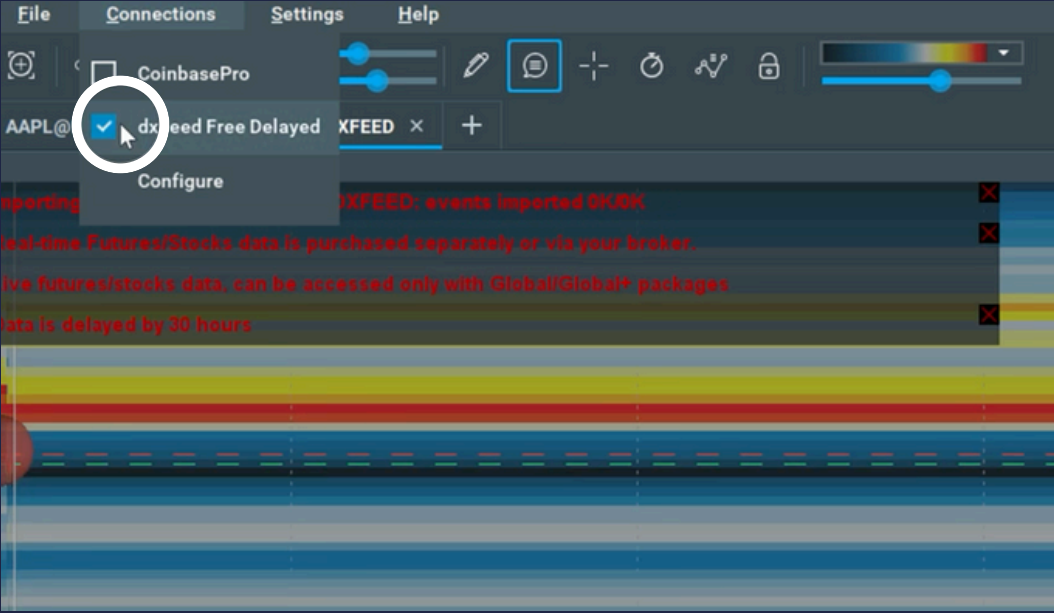
Within the Bookmap execution options window, choose "Trading mode" and then select "OK."



If Windows Defender Firewall opens and prompts you again, choose "Private networks, such as a home network or office network," and then click "Allow access."



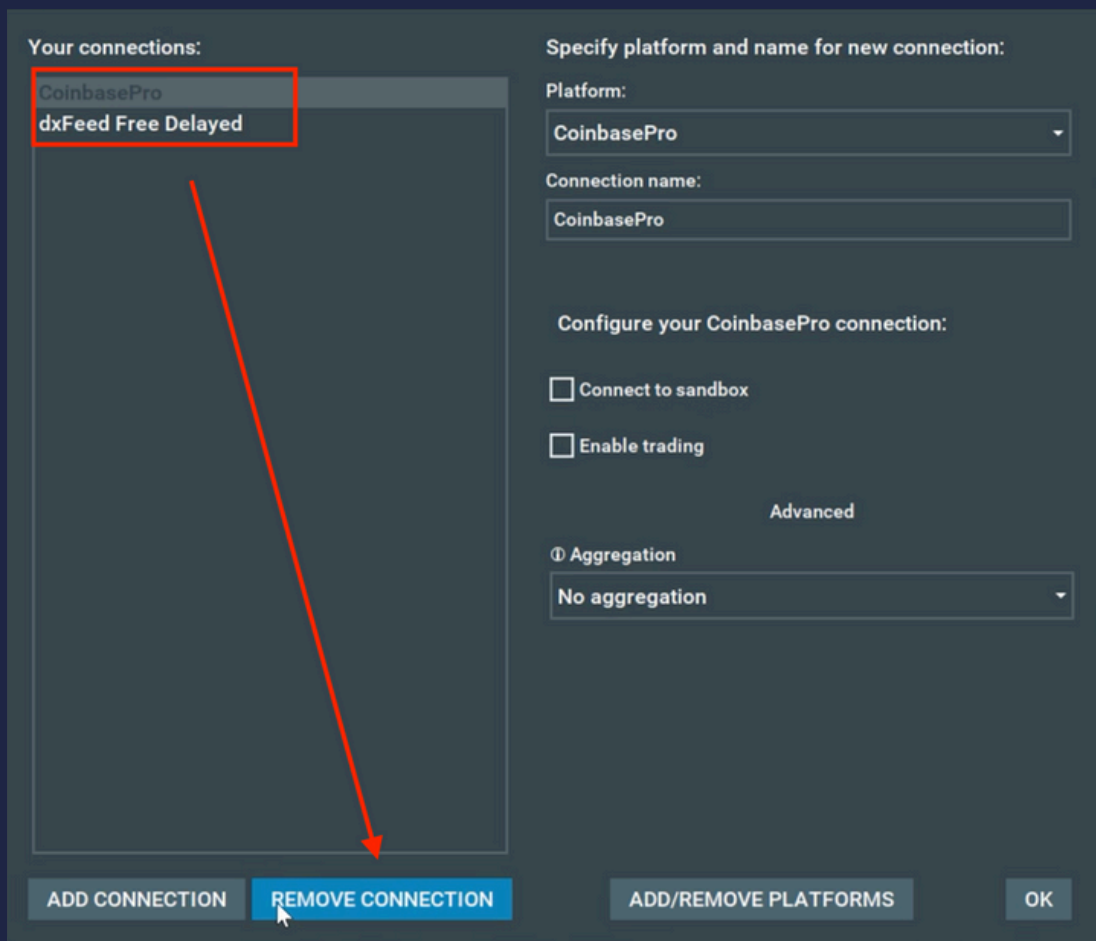
Click on "Connections" in the menu bar, then uncheck "CoinbasePro" and "dxFeed Free Delayed." Proceed by clicking "Configure."







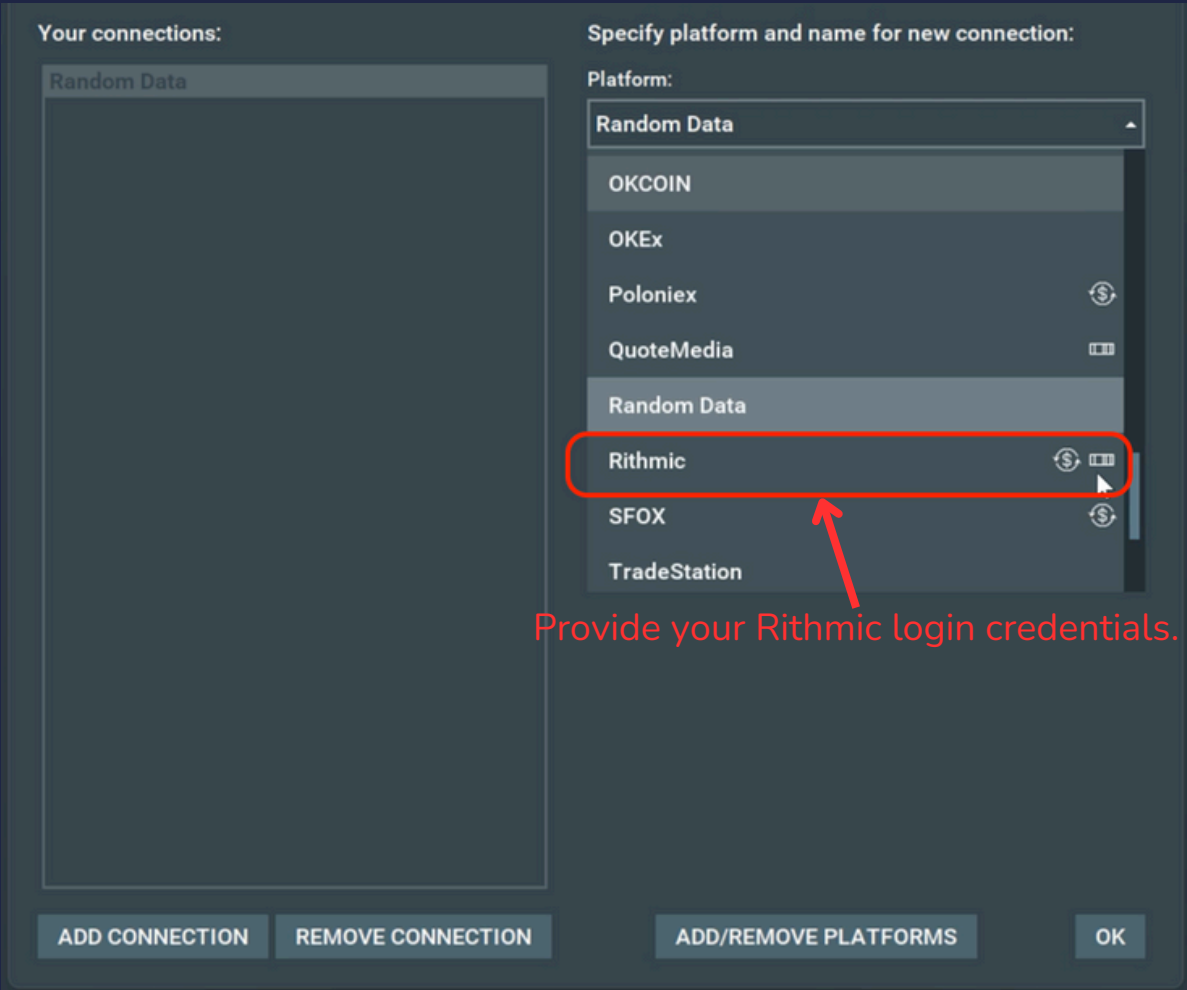
In the "Connectivity Setup" window, choose each connection unrelated to Phidias Propfirm and select "Remove Connection."





Click on "Add Connection" located at the bottom left of the window.

Within the dropdown menu, scroll and choose "Rithmic."

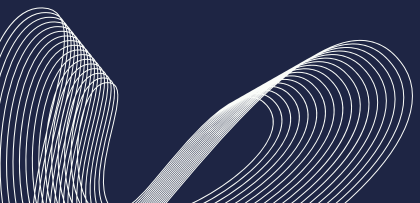


If residing in the United States, opt for Chicago. In Europe, select Europe. In Asia, choose Singapore.



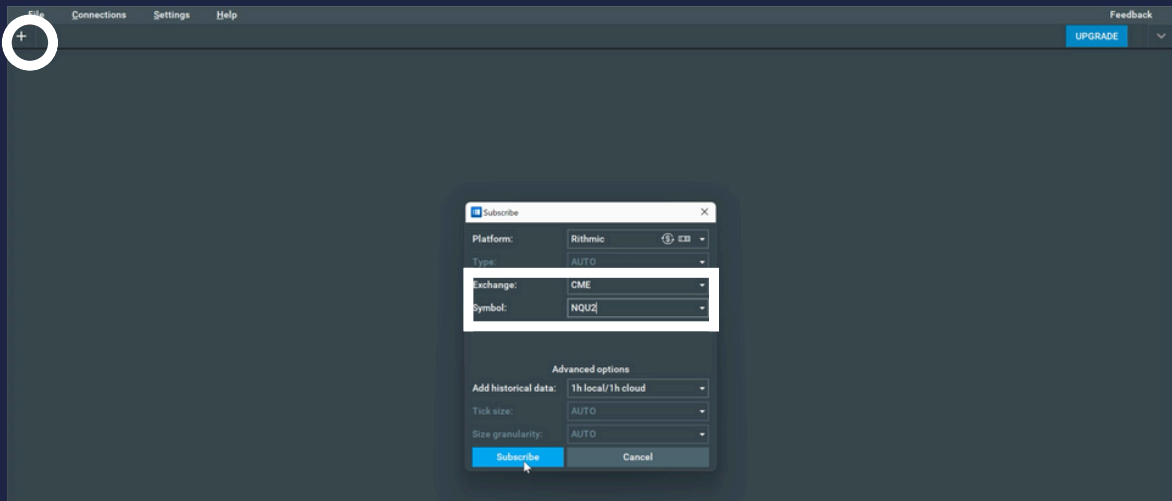
Click "OK" to proceed. (In this instance, "Europe" was chosen.)

A screenshot of a software window titled "Connectivity configuration". The window is divided into two main sections. On the left, under "Your connections:", there is a list of connections: "CoinbasePro", "dxFeed Free Delayed", and "Rithmic". On the right, under "Specify platform and name for new connection:", there are several fields: "Platform:" with a dropdown menu showing "Rithmic"; "Connection name:" with a text input field containing "Rithmic"; "Configure your Rithmic connection:" section with "Username:" and "Password:" fields (both highlighted with a red border); "System:" with a dropdown menu showing "Rithmic Paper Trading"; "Gateway:" with a dropdown menu showing "Europe"; and three checkboxes: "Aggregate quotes", "Plugin mode", and "Convert order to Market on reject". At the bottom of the window, there are four buttons: "ADD CONNECTION", "REMOVE CONNECTION", "ADD/REMOVE PLATFORMS", and "OK". A mouse cursor is pointing at the "OK" button.

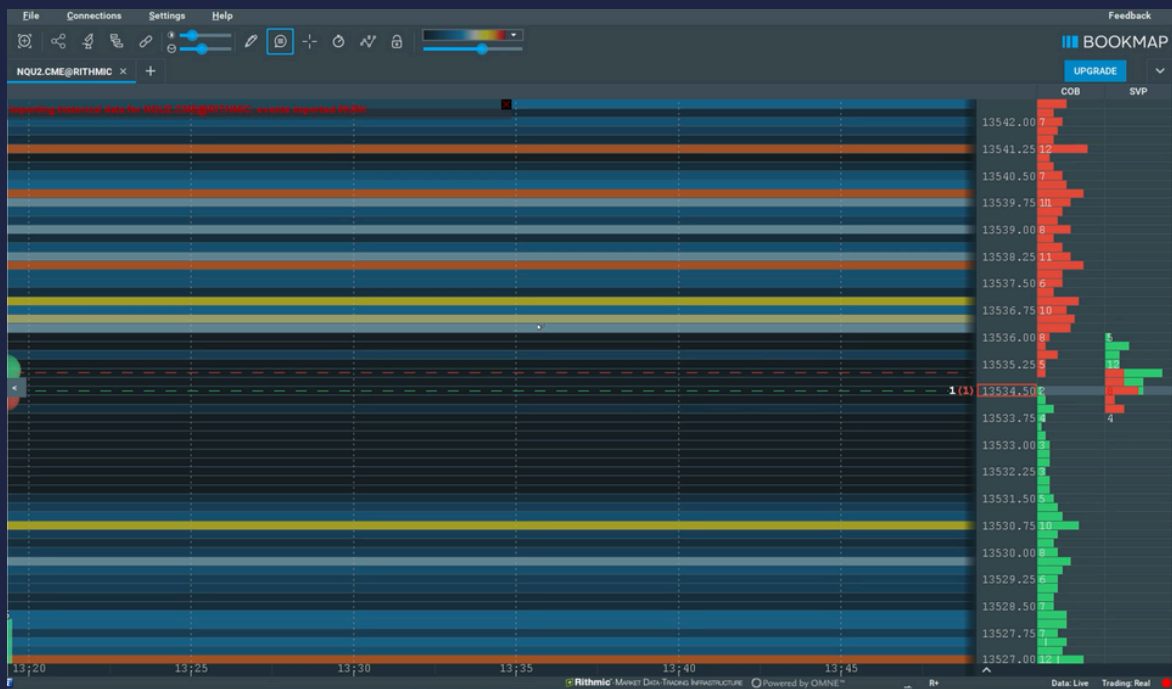




Navigate to the Connections tab on the menu bar and choose Rithmic. After connecting Rithmic, select the "+" button to add your markets and instruments, and then click on Subscribe.



Following the aforementioned steps, you should now be able to view this screen:



Congratulations on successfully linking your Rithmic account to Bookmap!





We take pride in mentoring traders towards success. Discover how Phidias PropFirm can benefit you. Become part of our community. We anticipate your online presence!  
#TradingSuccess #PhidiasSupport"

